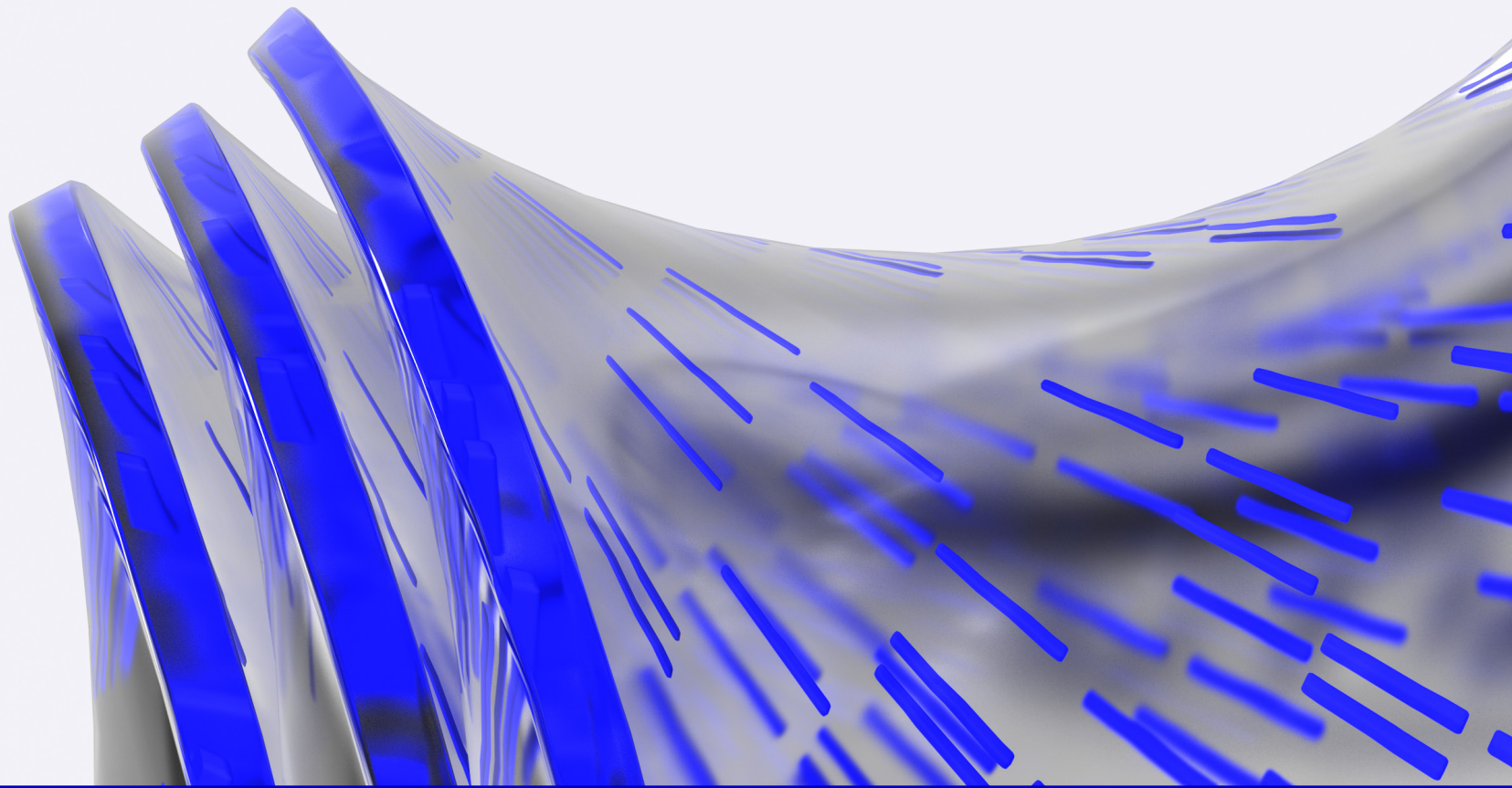


# Respiratory Vaccination Clinic Guide

The information herein is for formulary decision-makers. It is not intended for healthcare providers making individual prescribing decisions.





# Table of Contents



03	Overlapping Illnesses
04	Clinic Implementation
08	Best Practice Resources
09	Additional Resource
09	Provider Resource

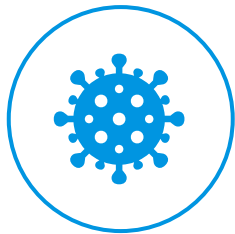


# Acute Respiratory Diseases Can Occur Concurrently, Highlighting the Importance of Staying Up-to-Date with Vaccinations



Viral and bacterial coinfection can occur, especially throughout the rise of diseases during influenza season<sup>1</sup>

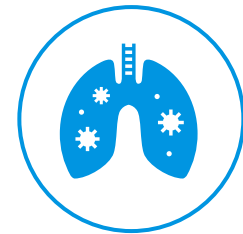
Coinfection cases can be serious:



**Bacterial secondary infections or coinfections** associated with flu are a leading cause of morbidity and mortality, especially among **high-risk groups such as the elderly**<sup>2</sup>



**Among adults ≥65 years**, RSV-bacterial coinfection is associated with **higher mortality compared to infection with RSV alone** ( $P=0.01$ )<sup>3,\*</sup>



**Adults coinfectd with COVID-19 and *S. pneumoniae*** were shown to have **impaired immunity to COVID-19**<sup>4</sup>

\*The study included all patients ≥18 years old who were hospitalized for acute respiratory infections with available results for RSV. A total of 12,144 patients were included.<sup>3</sup>

RSV=respiratory syncytial virus.

**References:** **1.** Bartley PS, Deshpande A, Yu PC, et al. Bacterial coinfection in influenza pneumonia: rates, pathogens, and outcomes. *Infect Control Hosp Epidemiol.* 2022;43(2):212–217. **2.** Joseph C, Togawa Y, Shindo N. Bacterial and viral infections associated with influenza. *Influenza Other Respir Viruses.* 2013;7 Suppl 2(Suppl 2):105-113. **3.** Godefroy R, Giraud-Gatineau A, Jimeno MT, et al. Respiratory syncytial virus infection: its propensity for bacterial coinfection and related mortality in elderly adults. *Open Forum Infect Dis.* 2020;7(12):ofaa546. **4.** Mitsi E, Reiné J, Urban BC, et al. Streptococcus pneumoniae colonization associates with impaired adaptive immune responses against SARS-CoV-2. *J Clin Invest.* 2022;132(7):e157124.

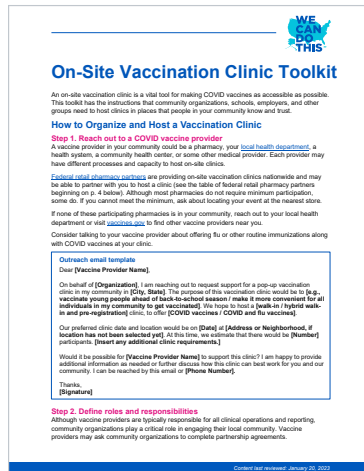


# Consider CDC Guidance to Help Improve Access to Vaccines and Help Increase Vaccination Rates Through Vaccination Clinics



Vaccination clinics are a year-round resource to consider for your organization

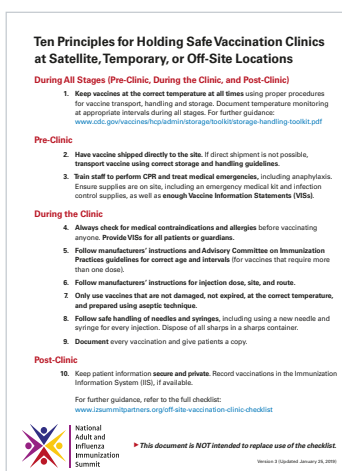
Offer ease of access for patients and possibly their family members<sup>1,2</sup>



## On-Site Vaccination Clinic Toolkit

Consider utilizing this on-site clinic toolkit by HHS as a guide to add respiratory vaccines to your clinics

Clicking on the above link will direct you to third-party site over which Pfizer has no control or responsibility. This link is subject to change.



## Ten Principles for Holding Safe Vaccination Clinics at Satellite, Temporary, or Off-Site Locations

Consider utilizing this list of principles for holding off-site clinics as guidance for a successful event

Clicking on the above link will direct you to third-party site over which Pfizer has no control or responsibility. This link is subject to change.

Every encounter, including during vaccination clinics, allows another opportunity to assess patient eligibility and close vaccination gaps<sup>3</sup>

CDC=Centers for Disease Control and Prevention; HHS=US Department of Health and Human Services.

**References:** **1.** US Department of Health and Human Services. On-site vaccination clinic toolkit. Updated June 22, 2023. Accessed August 1, 2023. <https://wecandothis.hhs.gov/resource/onsite-vaccination-clinic-toolkit> **2.** National Adult and Influenza Immunization Summit. Ten principles for holding safe vaccination clinics at satellite, temporary, or off-site locations. Updated January 25, 2023. Accessed November 2, 2023. <https://www.izsummitpartners.org/content/uploads/2017/04/Ten-principles-for-safe-vac-clinics-1-pg-sum.pdf> **3.** American Society of Health System Pharmacists. ASHP guidelines on the pharmacist's role in immunization. Accessed November 1, 2023. [https://www.ashp.org/-/media/assets/policy\\_guidelines/docs/guidelines/pharmacists-role-immunization.ashx](https://www.ashp.org/-/media/assets/policy_guidelines/docs/guidelines/pharmacists-role-immunization.ashx)



# Find Alternative Vaccination Locations



**Refer patients to the following options if an on-site or off-site clinic is unavailable:**

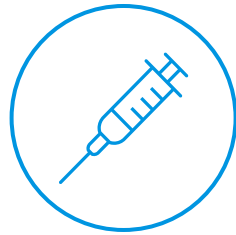
- Visit [vaxassist.com](https://vaxassist.com), a site from Pfizer, which lets you check eligibility for respiratory vaccines (COVID-19, flu, RSV, and pneumococcal) and find vaccine locations (for certain vaccines across manufacturers) near you
- Call their primary care provider or local pharmacy for vaccination locations



# Consider Offering Multiple Vaccines During Your Clinic



Vaccine co-administration increases access and opportunities to vaccinate



- According to the CDC, co-administration of vaccines increases the likelihood of a patient getting all the recommended vaccines<sup>1</sup>
- It reduces the number of missed vaccination opportunities, which are frequently the cause of low vaccination rates<sup>2</sup>
- Vaccination coverage rates are increased, vaccination consultations and associated costs are reduced, and compliance with recommendations is improved<sup>2</sup>
- The timeliness of vaccine administration according to recommended age or need increases<sup>2</sup>

**[Click here](#) for CDC recommendations to see when co-administration is appropriate for certain respiratory vaccines<sup>3</sup>**

**Clicking on the above link will direct you to a third-party site over which Pfizer has no control or responsibility.**

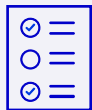


# Consider Following CDC Recommendations and Activities to Set Up a Respiratory Vaccination Clinic



The CDC outlines steps to reference in carrying out a vaccination clinic.

Click below for additional information<sup>1-4</sup>:



**Planning  
activities**



**Pre-clinic  
activities**



**During the  
clinic activities**



**Post-clinic  
activities**

Clicking on the above boxes will direct you to third-party sites over which Pfizer has no control or responsibility. These links are subject to change.

**References:** **1.** Centers for Disease Control and Prevention. Planning activities. Updated November 15, 2022. Accessed October 16, 2023. <https://www.cdc.gov/vaccines/hcp/admin/mass-clinic-activities/planning-activities.html> **2.** Centers for Disease Control and Prevention. Pre-clinic activities. Updated November 15, 2022. Accessed October 16, 2023. <https://www.cdc.gov/vaccines/hcp/admin/mass-clinic-activities/pre-clinic-activities.html> **3.** Centers for Disease Control and Prevention. During the clinic activities. Updated November 15, 2022. Accessed October 16, 2023. <https://www.cdc.gov/vaccines/hcp/admin/mass-clinic-activities/during-clinic-activities.html> **4.** Centers for Disease Control and Prevention. Post-clinic activities. Updated November 15, 2022. Accessed October 16, 2023. <https://www.cdc.gov/vaccines/hcp/admin/mass-clinic-activities/post-clinic-activities.html>



# Special Considerations for Vaccinating Individuals in LTC Facilities



These resources discuss the importance of vaccinating patients in LTC facilities

Click below for additional information<sup>1,2</sup>:



**COVID-19 vaccines for long-term care residents**



**State long-term care pneumococcal vaccination laws**

**Clicking on the above boxes will direct you to a third-party site over which Pfizer has no control or responsibility. These links are subject to change.**

LTC=long-term care.

**References:** **1.** Centers for Disease Control and Prevention. COVID-19 vaccination for long-term care residents. Updated July 2, 2024. Accessed August 2, 2024. [https://www.cdc.gov/covid/vaccines/long-term-care-residents.html?CDC\\_AAref\\_Val=https://www.cdc.gov/coronavirus/2019-ncov/vaccines/recommendations/LTCF-residents.html](https://www.cdc.gov/covid/vaccines/long-term-care-residents.html?CDC_AAref_Val=https://www.cdc.gov/coronavirus/2019-ncov/vaccines/recommendations/LTCF-residents.html) **2.** Centers for Disease Control and Prevention. Pneumococcal vaccination laws for state long-term care facilities. Updated May 16, 2024. Accessed August 2, 2024. [https://www.cdc.gov/phlp/php/publications/pneumococcal-vaccination-laws-state-ltc-facilities.html?CDC\\_AAref\\_Val=https://www.cdc.gov/phlp/publications/topic/menus/ltpneumo/index.html](https://www.cdc.gov/phlp/php/publications/pneumococcal-vaccination-laws-state-ltc-facilities.html?CDC_AAref_Val=https://www.cdc.gov/phlp/publications/topic/menus/ltpneumo/index.html)





# Immunize.org Vaccination Clinic Supply Checklist



Ensure your vaccination clinic has all necessary items

Find a copy of the checklist [here](#).

Clicking on the link to the left will direct you to a third-party site over which Pfizer has no control or responsibility. This resource is subject to change.

## Supplies You May Need at an Immunization Clinic<sup>1</sup>

### A. Vaccines you intend to give<sup>2</sup>

- For a list of vaccines commonly given in the U.S., refer to [www.cdc.gov/vaccines/vpd/vaccines-list.html](http://www.cdc.gov/vaccines/vpd/vaccines-list.html). Select the vaccines you need based on the age of the patients you expect at your clinic.
- For instructions on how to pack and transport vaccines, go to [www.cdc.gov/vaccines/hcp/admin/storage/toolkit/index.html](http://www.cdc.gov/vaccines/hcp/admin/storage/toolkit/index.html).

### B. Patient Resources

**Vaccine Information Statements (VISs)<sup>2</sup>**  
Most current version associated with each vaccine used in the clinic (available in English and over 40 languages at [www.immunize.org/vis](http://www.immunize.org/vis))

**After the shots . . . what to do if your child has discomfort**

Includes information on medicines to reduce pain and fever (available at [www.immunize.org/catg.d/p4015.pdf](http://www.immunize.org/catg.d/p4015.pdf))

### C. Routine Clinic Supplies<sup>2</sup>

- Appropriate storage units and monitoring equipment to maintain vaccine cold chain (see [www.cdc.gov/vaccines/hcp/admin/storage/toolkit/index.html](http://www.cdc.gov/vaccines/hcp/admin/storage/toolkit/index.html))
- Needle disposal "sharps" containers
- 1 mL, 3 mL syringes
- 22 and 25g needles
  - $\frac{3}{8}$ ";  $1\frac{1}{2}$ ";  $1\frac{3}{8}$ ";  $1\frac{1}{4}$ ";  $2$ " (see [Administering Vaccines: Dose, Route, Site, and Needle Size](http://www.immunize.org/catg.d/p3085.pdf) at [www.immunize.org/catg.d/p3085.pdf](http://www.immunize.org/catg.d/p3085.pdf))
- Medical gloves (optional for administration of vaccine)
- Alcohol wipes
- Spot band aids ☐ Rectangular band aids
- 1" sterile gauze pads or cotton balls
- Temperature monitoring devices (preferably continuous digital data loggers) for all vaccine storage units
- Emergency transport container
- Paper towels
- Hand sanitizer
- Sanitizing products for surfaces
- Face masks or respirators if protection from respiratory viruses is desired

### D. Medical Emergency Supplies<sup>2</sup>

- Medical Management of Vaccine Reactions in Children and Teens in a Community Setting [www.immunize.org/catg.d/p3082a.pdf](http://www.immunize.org/catg.d/p3082a.pdf)
- Medical Management of Vaccine Reactions in Adults in a Community Setting [www.immunize.org/catg.d/p3082.pdf](http://www.immunize.org/catg.d/p3082.pdf)

#### First-line medication

- Epinephrine 1 mg/mL solution (1:1000 concentration) in autoinjector or various vials or ampules. At least three epinephrine doses should be available onsite.

**Other medications:** H<sub>1</sub> antihistamines are for itching and hives only and not for managing anaphylaxis. Oral antihistamines should not be administered if airway is compromised.

- Diphenhydramine (e.g., Benadryl) oral (12.5 mg/5 mL liquid, 25 or 50 mg capsules/tablets) or injectable (50 mg/mL solution)

#### Other supplies for emergencies:

- Syringes (1 and 3 mL) and needles (22 and 25g,  $1\frac{1}{2}$ ",  $1\frac{3}{8}$ ", and  $2$ " for epinephrine or diphenhydramine)
- Alcohol wipes
- Stethoscope
- Blood pressure measuring device (with a variety of cuff sizes as needed)
- Light with extra batteries (for examination of mouth and throat)
- A timing device, such as wristwatch, for measuring pulse
- Cell phone or access to onsite phone
- CPR rescue mask with one-way valve
- Oxygen (if available)

### E. Office Supplies

- Calendar ☐ Stapler/staples
- Pens ☐ Tape
- File folders ☐ Paper clips
- Scissors ☐ Sticky notes
- Pad of paper ☐ Wastebaskets/trash bags

### F. Documents and Forms

- Current immunization schedules for children, adolescents, and adults [www.immunize.org/cdc/schedules](http://www.immunize.org/cdc/schedules)
- Summary of Recommendations for Child/Teen Immunization [www.immunize.org/catg.d/p2010.pdf](http://www.immunize.org/catg.d/p2010.pdf)
- Summary of Recommendations for Adult Immunization [www.immunize.org/catg.d/p2011.pdf](http://www.immunize.org/catg.d/p2011.pdf)
- Vaccine standing orders and protocols [www.immunize.org/standing-orders](http://www.immunize.org/standing-orders)
- Internet access or hotspot to IIS or EMR to access/update immunization records
- Immunization record cards for patients (pediatric and adult) shop [immunize.org/collections/immunization-record-cards](http://immunize.org/collections/immunization-record-cards)
- Vaccination administration record sheets (e.g., medical records, if needed); for children and teens: [www.immunize.org/catg.d/p2022.pdf](http://www.immunize.org/catg.d/p2022.pdf); for adults: [www.immunize.org/catg.d/p2023.pdf](http://www.immunize.org/catg.d/p2023.pdf)
- Screening Checklist for Contraindications to Vaccines for Children and Teens [www.immunize.org/catg.d/p4060.pdf](http://www.immunize.org/catg.d/p4060.pdf)
- Screening Checklist for Contraindications to Vaccines for Adults [www.immunize.org/catg.d/p4065.pdf](http://www.immunize.org/catg.d/p4065.pdf)
- Vaccine Adverse Events Reporting System (VAERS) information <https://vaers.hhs.gov>
- Temperature logs and other materials to help manage vaccine storage and handling [www.immunize.org/handouts/vaccine-storage-handling.asp](http://www.immunize.org/handouts/vaccine-storage-handling.asp)
- Billing forms, if needed
- Laptop computer, tablet, or smartphone
- Release of information forms
- Schedules, including dates and times, of future immunization clinics

1. See also "Tools to Assist Satellite, Temporary, and Off-Site Vaccination Clinics" at [www.izsummitpartners.org/nalis-workgroups/influenza-workgroup/off-site-clinic-resources/](http://www.izsummitpartners.org/nalis-workgroups/influenza-workgroup/off-site-clinic-resources/)

2. Always check the expiration dates of all vaccines, medications, and medical supplies while packing and before using! In addition, be sure to check that you have the most current versions of the VISs. For a listing of current dates of VISs, visit [www.immunize.org/vis](http://www.immunize.org/vis).



FOR PROFESSIONALS [www.immunize.org](http://www.immunize.org) / FOR THE PUBLIC [www.vaccineinformation.org](http://www.vaccineinformation.org)

[www.immunize.org/catg.d/p3046.pdf](http://www.immunize.org/catg.d/p3046.pdf)  
Item #P3046 (4/19/2023)



Scan for PDF